

Friday 12th January 2024

Welcome to Year 6 – Spring 1

Dear Parent/Carer



We would like to welcome back all of our Year 6 parents and children to the start of a new calendar year. We hope that your child has had a relaxing Christmas break and is as excited as we are to start 2024 in a positive way. This letter has been created to provide an insight into what we are going to be doing this half term as Year 6.

Theme:

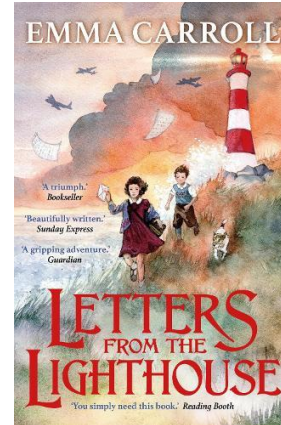
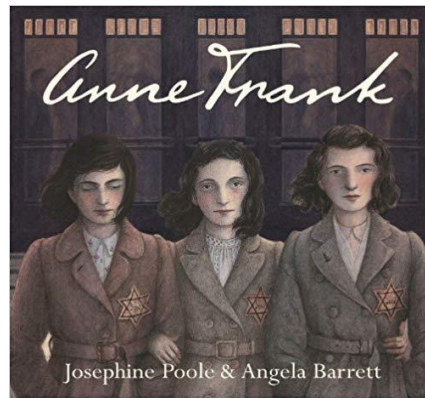
Our theme for this half term is **Conflict and Resolution**, where we will be posing the question: **Can war ever be justified?** We will be covering this theme across many different subjects in the curriculum; not just in English and History, as before. Our theme starts with a class trip to the SPLATT Theatre, which some of your children have already attended and our theme ends with a DT project where we will be making our own World War 1 trench (can you please save any shoe boxes for this).

Homework:

Last term, we trialled a homework club for any children who did not complete their homework – this was a huge success, seeing the amount of homework surge in number over the last few months. With that in mind, we have made more improvements. Your child will get 3 CGP SATs books: a Maths, a Reading and SPaG (spelling, punctuation and grammar) book. Each Monday, we will assign work to completed in all three books. The children are given all week to complete these tasks. If the work is not complete or they do not remember to hand in their books, they will be in Homework Club on Monday lunchtimes with myself and Mr Pollock. This is good practise for life in secondary school, where homework will be set daily.

Daily	Monday	Friday	Half Termly
Reading for 15 minutes 	Maths, Reading and SPaG SATs practice with CGP books	Spelling 	A project will be set for the children based around the topic they have been learning at school.

In English and Reading, we will be reading the following texts:




Maths:

In Maths, we will be starting the half term by understanding ratio and algebra, analysing their use in society today and how to answer both reasoning and arithmetic questions on these subjects.



Ratio and Proportion

A **ratio** is a relation that compares two numbers or quantities.
You can compare two parts to each other or to the whole.

	$2:1$	$1:2$	$2:3$	$1:3$
	$2/1$	$1/2$	$2/3$	$1/3$
	2 to 1	1 to 2	2 to 3	1 to 3

A **proportion** is a statement or equation that equates two ratios.

$2:2 = 4:4$
 $2:2 :: 4:4$
2 is to 2 as 4 is to 4

sciencesnotes.org

Learning Algebra

In algebra, a letter is used to represent an unknown number.

Take a number n (lets call this number 'n')	double it $2 \times n$ (times it by 2)	add 3 $2n+3$
---	--	-----------------

if 'n' was 4 then $2n+3 = 11$
This is called an equation

Solving an algebra equation

Solving an algebra equation means finding the value of the letter. To do this, we do the steps above in reverse.

undo the last step $(2n+3) - 3$ to 3	undo the next step $2n + 2$ divide by 2	undo the first step n what was 'n'?
--	---	---

if $2n+3 = 11$ then $2n = 8$ and $n = 4$

There will be another practise SATs week on the last week of this half term.

Spanish, Music and P.E will be taught by specialist teachers.

If you or your child has any questions, please do not hesitate to contact their class teacher.

Best wishes,
Mr Parkhouse
Head of Year 6

Elmwood Junior School, Lodge Road, Croydon, CR0 2PL

Tel: 020 8684 4007 | E-Mail: admin@elmwood-jun.croydon.sch.uk | Website: www.elmwood-jun.croydon.sch.uk

